



香港教育大學

The Education University  
of Hong Kong

# 2<sup>ND</sup> MAJORS & MINORS



2024/25



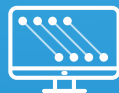
Hello

你好

Bonjour

안녕

Ciao



FACULTY OF HUMANITIES | 學人院文  
人脈弘道 *Humanity can broaden the Way*

# Second Majors & Minors

## Contents

Departments	01
Second Majors	02
Minors	06
General Education	18
Free Elective Courses	20
Enquiries	23

A Second Major or a Minor in the humanities helps broaden and enrich your study in various aspects of human culture, including languages, literatures, cultures, religions and language education. The courses and programmes in the humanities provide you with the knowledge, intellectual skills and habits of thought indispensable to modern education.

There may be some restrictions on the choices of Second Majors/Minors for some programmes. Please read carefully the requirements of the Second Majors/Minors and consult the offering departments/programmes before you make the choices.

Second Majors/Minors will not lead to a Qualified Teacher Status. Teaching practice or immersion/internship will not be arranged for students of Second Majors/Minors.

Each course carries 3 credit points (CPs).

## Departments

Department of Chinese Language Studies (CHL)  
中國語言學系

Department of Culture and Creative Arts (CCA)  
文化與創意藝術學系

Department of English Language Education (ELE)  
英語教育學系

Department of Linguistics and Modern Language Studies (LML)  
語言學及現代語言系

Department of Literature and Cultural Studies (LCS)  
文學及文化學系



## SECOND MAJORS

Chinese Language 中國語文

English Language 英國語文

Music 音樂

Visual Arts 視覺藝術

## MINORS

Business English in the 21st Century 21世紀商務英文

Chinese Language 中國語文

Chinese Religions and Culture 中國宗教與文化

Culture, Creativity, and Care 文化、創意、情切

English Language 英國語文

English Language Teaching (Primary) 英語教育 (小學)

English Language Teaching (Secondary) 英語教育 (中學)

Film and Popular Culture 電影與流行文化

French Studies 法語

Japanese Studies 日語

Korean Language Studies 韓語

Language and Society 語言與社會

Music 音樂

Studies on Chinese Language Curriculum 中國語文課程研究

Teaching Chinese as an International Language 國際漢語教學

Translation 翻譯

Visual Arts 視覺藝術

# SECOND MAJORS

Students of 4-/5-year full-time undergraduate programmes may be permitted to enroll in a Second Major, subject to

- Programme specific requirements; and
- GPA requirement of 3.00 or above in the first year of study.

The minimum credit requirement for the Second Majors offered by FHM is 36.

## Chinese Language 中國語文



Students who take Chinese Language as a Second Major will be able to demonstrate a sound understanding of the Chinese Language and advance their knowledge in the disciplines of linguistics, literature and culture.

Pre-requisite Requirements and Other Conditions for Declaring a Second Major:

- Level 3 or above in Chinese Language in HKDSE, or equivalent;
- Year 1 GPA: 3.00 or above; and
- Applicants may be invited for an interview.

Domain	Course Code	Course Title	Dept
Core	CHI1559	現代漢語	CHL
	CHI3714	古代漢語	CHL
	CUS1001	中國傳統人生哲學	LCS
	CUS4019	中國思想：原典選讀	LCS
	LIT1001	文學概論	LCS
	LIT2006	中國古代文學（一）（先秦－隋唐）	LCS
	LIT2007	中國古代文學（二）（宋－清）	LCS
	LIT2008	中國現代文學	LCS
Electives (choose any 4 courses)	CHI2450	語言傳播的理論與應用	LML
	CHI2571	媒體寫作	LCS
	CHI3565	漢語修辭學	LML
	CHI3575	漢字學	CHL
	CHI3712	粵語與香港本土文化	CHL
	CHI4577	漢語音韻學	CHL
	LIT1002	兒童文學	LCS
	LIT2003	文學創作	LCS
	LIT3013	專家詩	LCS
	LIT3014	香港文學	LCS
	LIT3015	明清小說	LCS
	LIT4020	中國文學批評	LCS
	LIT4023	莊子	LCS
	LIT4025	中國文學與其他藝術	LCS

## English Language 英國語文

Students who take English Language as Second Major will have in-depth knowledge of English as a language. They will advance their knowledge in the disciplines of linguistics, literature and applied English studies, in areas such as Phonetics and Phonology, Lexis, Morphology and Semantics, Grammar, Written and Spoken Discourse, Literature and Language Arts, Psycholinguistics, and Sociolinguistics.

Pre-requisite Requirements and Other Conditions for Declaring a Second Major:

- IELTS 6.5 or above (with no paper below 6.0);
- Year 1 GPA: 3.00 or above; and
- Applicants may be invited for an interview.

(Note: Students getting an average of Grade B or above in Year 1 mandatory English Enhancement courses will be considered more favorably.)

Domain	Course Code	Course Title	Dept
Core	ENG1249 <	English Grammar for Teachers I	LML
	ENG1324	Introduction to Linguistics	LML
	ENG1326	Introduction to English Phonetics and Phonology	LML
	ENG2246	Introduction to Sociolinguistics	LML
	ENG2347	Words and Their Meanings	LML
	ENG3340	Spoken and Written Discourse	LML
	ENG4419 or LIN4053	Second Language Acquisition and Curriculum Design: Theory and Practice or Psycholinguistics and Second Language Acquisition	ELE/LML
Electives (choose any 4 courses)	LIT1040	Approaching English Literature	LCS
	CUS3014	Introduction to Film Studies	LCS
	CUS3015	Approaching Popular Media	LCS
	ENG2250 <	English Grammar for Teachers II	LML
	ENG2336	Intercultural Communication	LML
	ENG3266	Classroom Discourse Analysis	ELE
	ENG3267	Language and Gender	LML
	ENG3323	Teaching Grammar and Vocabulary	ELE
	ENG3346	English as a Global Language	LML
	ENG3399	Teaching Pronunciation (pre-requisite: ENG1326)	ELE
	ENG3400	Advanced Phonology (pre-requisite: ENG1326)	LML
	ENG3416	Written Genres and the Genre Approach to ELT	ELE
	ENG3435	Integrating Information Technology in the ESL/EFL Classroom	ELE
	ENG3437	Fostering Intercultural Learning and Growing: From Theory to Practice	ELE
	ENG4269	Comparative Language Studies	LML
	ENG4280	Language Assessment	ELE
	ENG4292	Pragmatics	LML
	ENG4413	Teaching English Literature	ELE
	ENG4417	Motivation to Learn English: Theories and Practice	ELE
	ENG4436	Drama in the ESL/EFL Classroom (pre-requisite: LIT3049)	ELE
	ENG4440	Social Psychology of English Language Education	ELE
	ENG4450	Curriculum Design: Theory and Practice	ELE
	LIN3021	Language, Brain and the Mind	LML
LIT2048	Literature in Context I: 1789 - 1914	LCS	
LIT3046	Creative Writing	LCS	
LIT3047	Literatures in English: Poetry	LCS	
LIT3049	Drama Performance and Playwriting	LCS	
LIT3050	Readings in New Literatures in English	LCS	
LIT3051	Children's and Adolescent Literature	LCS	
LIT3052	Literature in Context II: 1914 - 2000	LCS	
LIT4054	Shakespeare	LCS	
LIT4055	Postcolonial Literatures in English	LCS	
LIT4060	Literature and the Environment	LCS	

< The title of this course is very similar to another course, LIN3045 English Grammar, which cannot be used to form Second Major/Minor in English Language. Please check the course code carefully during course registration.

# Music 音樂

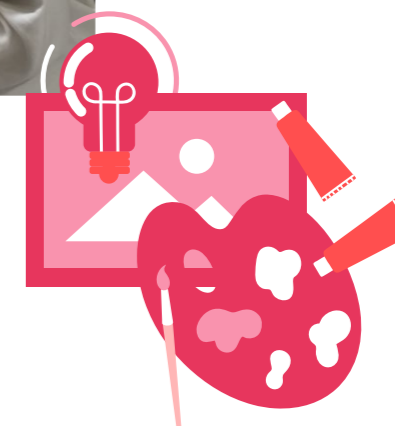
On the completion of this Second Major, students will be able to:

- Gain specialised subject knowledge in Music;
- Demonstrate a solid foundation of knowledge and skills in Music and related academic competencies to meet their future Music and education-related career needs; and
- Pursue for professional excellence and are committed to lifelong learning in Music.

Pre-requisite requirements and other conditions for declaring a Second Major:

- Level 3 or above in Music in HKDSE; or
- Satisfactory performance in music practical test (obtain qualification of Grade 6 or above (Royal Schools of Music or equivalent)).

Domain	Course Code	Course Title	Dept
(choose any 10 courses)	CAC3023	Chinese Music Traditions and Culture	CCA
	MUS1248	Creative Musicking	
	MUS2249	Communication and Performance Practices	
	MUS2250	Traditions and Practices of Music I	
	MUS2253	The Phenomenon of Music in Renaissance and Baroque	
	MUS2254	The Phenomenon of Music in the Classical and Romantic Era	
	MUS2265	Principles and Practices of Music Education I	
	MUS3222	Conducting	
	MUS3252	Traditions and Practices of Music II	
	MUS3255	The Phenomenon of Music in the 20th Century	
	MUS3258	Performance Matters I	
	MUS3266	Principles and Practices of Music Education II	
	MUS3338	Popular Music and Society	
	MUS4260	Creative Composing	



# Visual Arts 視覺藝術

On the completion of this Second Major, students will be able to:

- Gain specialised subject knowledge in Visual Arts;
- Demonstrate a solid foundation of knowledge and skills in Visual Arts and related academic competencies to meet their future art and education-related career needs; and
- Pursue for professional excellence and are committed to lifelong learning in Visual Arts.

Pre-requisite requirements and other conditions for declaring a Second Major:

- Applicants have to submit a personal portfolio which includes at least 10 artworks in not less than 2 different art media.

Domain	Course Code	Course Title	Dept
(choose any 10 courses)	ART1155	Craft	CCA
	ART1156	Contextual Studies of Art	
	ART1197	Graphic Communication	
	ART2175	Education in Art	
	ART2181	Drawing for Visualization and Experimentation	
	ART3169	Design for Living	
	ART3176	Curriculum Studies in Visual Arts Education	
	ART3182	Function and Expression in Ceramics	
	ART3183	Painting as Expression and Identity	
	ART3185	Digital Imaging and Interactive Media	
	ART3198	Print Media	
	ART4159	Aesthetics and Art Criticism	
	ART4168	Chinese Painting and Calligraphy	
	ART4184	Sculpture, Installation and Environmental Art	

# MINORS

Students of full-time undergraduate programmes (except those with programme/curriculum restriction) have the option of taking a Minor of 15 cps (or two Minors) of taught courses in the Core and Elective Domains for graduation with Minor(s), subject to specific requirements of the Minor(s).



— Plan —

- LISTENING
- WRITING
- READING
- SPEAKING

## Business English in the 21st Century 21世紀商務英文



(To be offered in Sem 2, 2024/25)

The cross-faculty collaborated Minor in Business English in the 21st Century will offer students specialised training in business English communication skills, which will benefit undergraduate students in several ways. It can provide students with comprehensive language support in English to align with the evolving global and local landscape and offer them a blend of academic study and work-related training experience at the University. It can also enhance their English language and communicative competence needed to succeed in the multilingual and technology-supported workplace for the 21st Century. Additionally, it seeks to broaden students' global perspectives and understanding of communication theories, practices, and strategies, empowering them to interact effectively in today's globalised and digitalised professional contexts.

Domain	Course Code	Course Title	Dept
Core	TBC	Business English I	CLE
	TBC	Business English II	
Electives (choose any 3 courses)	TBC	English for Global Citizenship: Globalisation in the Digital Age	CLE
	TBC	English for Global Citizenship: Global Communities	CLE
	ENG3437	Fostering Intercultural Learning and Growing: From Theory to Practice	ELE
	LIN3044	English for Cross-cultural Communication in Greater Bay Area and Beyond	LML
	BUS1021	Business Communication and Cultural Diversity at Workplace	SPSS

## Chinese Language 中國語文



The Minor enables students to explore Chinese language and its cultures through various linguistics, literature and culture courses offered. Those who graduate with Chinese Language as a Minor will be able to demonstrate a basic knowledge about how the Chinese language can be analysed and about how it is used to communicate in social, cultural and/or professional contexts.

Domain	Course Code	Course Title	Dept
Core (choose any 4 courses)	CHI1559	現代漢語	CHL
	CHI2450	語言傳播的理論與應用	LML
	CHI3565	漢語修辭學	LML
	CHI3714	古代漢語	CHL
	CUS1001	中國傳統人生哲學	LCS
	LIT1001	文學概論	LCS
	LIT1002	兒童文學	LCS
	LIT2003	文學創作	LCS
	LIT2006	中國古代文學 (一) (先秦-隋唐)	LCS
	LIT2007	中國古代文學 (二) (宋-清)	LCS
	LIT2008	中國現代文學	LCS
	Electives (choose any 1 course)	CHI3575	漢字學
CHI4577		漢語音韻學	CHL
LIT3013		專家詩	LCS
LIT3014		香港文學	LCS
LIT4020		中國文學批評	LCS

你好  
Hello

再见  
Bye



# Chinese Religions and Culture

## 中國宗教與文化



This Minor aims to deepen students' understanding of popular religious beliefs and customs in Chinese culture. By studying the major religions in China, their impact on ancient and modern Chinese cultural history, and the cultural collision and religious transformation after the spread of Western religions in China, students will grasp the way religions and culture influence the life of Chinese, and gain a more comprehensive understanding of Chinese traditional culture.

Domain	Course Code	Course Title	Dept
Electives (choose any 5 courses)	CUS1001#♦	中國傳統人生哲學	LCS
	CUS1003	宗教傳播與社會變遷	
	CUS2005	西方宗教與中國文化	
	CUS3007	儒道文化互動	
	CUS3008	佛教在香港	
	CUS4009	中西神話的文化想像	
	CUS4019#	中國思想：原典選讀	
	HIS3030*	中國宗教與社會史	
	HIS4048*	中國思想史	
	LIT4023	莊子	
LIT5030	周易		

# The courses, which are Major Core of BEd(CL) (Programme Code: A5B060), are **only applicable for non-BEd(CL) students**.

♦ The course, which is Major Core of BA(Lang Studies) (Programme Code: A4B067), is **only applicable for non-BA(Lang Studies) students**.

\* The courses, which are Major Core of BEd(CHI HIST) (Programme Code: A5B083), are **only applicable for non-BEd(CHI HIST) students**.



# Culture Creativity and Care

## 文化、創意、情切



This Minor introduces students to culturally-specific concepts of health, wellness, and care. It seeks to enhance students' understanding of the contributions of creativity, self-expression, and self-understanding to human flourishing. Students will be able to engage creatively in projects and practices that conduce to wellbeing and health, and support the efforts of institutions and organizations to enhance their practices of caretaking and caregiving.

Domain	Course Code	Course Title	Dept
Core (choose any 1 course)	CUS3025	Cultures of Care	LCS
	CUS3026	Writing and Mindfulness	
Electives (choose any 4 courses)	CAC2022	Cultural Perspectives in Creative Arts	CCA
	GEM2018*	Music, Health, and Wellbeing	CCA
	LIT3046	Creative Writing	LCS
	LIT3051	Children's and Adolescent Literature	LCS
	MUS3338	Popular Music and Society	CCA
	HCS4061	Therapeutic Use of Music in Healthcare	HPE
PSY3022	Cross-cultural Psychology	PS	

\* The University's double-counting policy allows double counting of up to nine credit points for a five-year programme and six credit points for a four-year programme to fulfil no more than two domain requirements (e.g. for both the first and second majors) within a full-time undergraduate degree programme.

# English Language 英國語文

The Minor gives students opportunities to explore the English language and also to acquaint themselves with some of its associated cultures through the various linguistics and literature courses offered. Those who graduate with English Language as a Minor will be able to demonstrate a basic knowledge about how the English language can be analysed and about how it is used to communicate in social, cultural and/or professional contexts.

Domain	Course Code	Course Title	Dept
Electives (choose any 5 courses)	CUS3014	Introduction to Film Studies	LCS
	CUS3015	Approaching Popular Media	LCS
	ENG1249 <sup>&lt;</sup>	English Grammar for Teachers I	LML
	ENG1324	Introduction to Linguistics	LML
	ENG1326	Introduction to English Phonetics and Phonology	LML
	ENG2246	Introduction to Sociolinguistics	LML
	ENG2250 <sup>&lt;</sup>	English Grammar for Teachers II	LML
	ENG2336	Intercultural Communication	LML
	ENG2347	Words and Their Meanings	LML
	ENG3266	Classroom Discourse Analysis	ELE
	ENG3267	Language and Gender	LML
	ENG3323	Teaching Grammar and Vocabulary	ELE
	ENG3340	Spoken and Written Discourse	LML
	ENG3346	English as a Global Language	LML
	ENG3399	Teaching Pronunciation (pre-requisite: ENG1326)	ELE
	ENG3400	Advanced Phonology (pre-requisite: ENG1326)	LML
	ENG3416	Written Genres and the Genre Approach to ELT	ELE
	ENG3435	Integrating Information Technology in the ESL/EFL Classroom	ELE
	ENG3437	Fostering Intercultural Learning and Growing: From Theory to Practice	ELE
	ENG4269	Comparative Language Studies	LML
	ENG4280	Language Assessment	ELE
	ENG4292	Pragmatics	LML
	ENG4413	Teaching English Literature	ELE
	ENG4417	Motivation to Learn English: Theories and Practice	ELE
	ENG4419	Second Language Acquisition and Curriculum Design: Theory and Practice	ELE
	ENG4436	Drama in the ESL/EFL Classroom (pre-requisite: LIT3049)	ELE
	ENG4440	Social Psychology of English Language Education	ELE
	ENG4450	Curriculum Design: Theory and Practice	ELE
	LIN3021	Language, Brain and the Mind	LML
	LIN4053	Psycholinguistics and Second Language Acquisition	LML
	LIT1040	Approaching English Literature	LCS
	LIT2048	Literature in Context I: 1789 - 1914	LCS
LIT3046	Creative Writing	LCS	
LIT3047	Literatures in English: Poetry	LCS	
LIT3049	Drama Performance and Playwriting	LCS	
LIT3050	Readings in New Literatures in English	LCS	
LIT3051	Children's and Adolescent Literature	LCS	
LIT3052	Literature in Context II: 1914 - 2000	LCS	
LIT4054	Shakespeare	LCS	
LIT4055	Postcolonial Literatures in English	LCS	
LIT4060	Literature and the Environment	LCS	

<sup><</sup> The title of this course is very similar to another course, LIN3045 English Grammar, which cannot be used to form Second Major/Minor in English Language. Please check the course code carefully during course registration.

# English Language Teaching (Primary/Secondary)<sup>^</sup> 英語教育 (小學 / 中學)<sup>^</sup>



These Minors focus on the teaching of the English language in primary schools (Primary Strand)/ secondary schools (Secondary Strand) and the practical issues and strategies involved. They enable students to have an understanding of how English is taught and help learners develop meta-knowledge and meta-cognition of the second language learning processes and strategies, which can be useful to their own English language learning.

These Minors are only offered to undergraduate students in their 3rd year of study or beyond. The exit requirement of these Minors is IELTS 6.5 (with no sub-score lower than 6.0) or equivalent.

<sup>^</sup> The English Language Teaching minor will not be offered from cohort 2023-24 onwards.

## Primary Strand

Domain	Course Code	Course Title	Dept
Core	ENG2256	Primary ELT Methods I	ELE
	ENG3261	Primary ELT Methods II	
	ENG4419 <sup>Ω</sup>	Second Language Acquisition and Curriculum Design: Theory and Practice	
Electives (choose any 2 courses)	ENG2402	Children's Literature in the ESL/EFL Classroom	ELE
	ENG3323	Teaching Grammar and Vocabulary	
	ENG3399	Teaching Pronunciation (pre-requisite: ENG1326)	
	ENG3416	Written Genres and the Genre Approach to ELT	
	ENG3435	Integrating Information Technology in the ESL/EFL Classroom	
	ENG4280	Language Assessment	
	ENG4285	Content-based Language Teaching (pre-requisite: ENG3261 or ENG3262)	
	ENG4342	Theories of Language Learning: Cognition and Context	
ENG4436 <sup>#</sup>	Drama in the ESL/EFL Classroom (pre-requisite: ENG2333, ENG3274 and LIT3049)		

## Secondary Strand

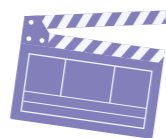
Domain	Course Code	Course Title	Dept
Core	ENG2257	Secondary ELT Methods I	ELE
	ENG3262	Secondary ELT Methods II	
	ENG4419 <sup>Ω</sup>	Second Language Acquisition and Curriculum Design: Theory and Practice	
Electives (choose any 2 courses)	ENG2403	Using Language Arts and Non-language Arts in the ESL/EFL Classroom	ELE
	ENG3323	Teaching Grammar and Vocabulary	
	ENG3399	Teaching Pronunciation (pre-requisite: ENG1326)	
	ENG3416	Written Genres and the Genre Approach to ELT	
	ENG3435	Integrating Information Technology in the ESL/EFL Classroom	
	ENG4280	Language Assessment	
	ENG4285	Content-based Language Teaching (pre-requisite: ENG3261 or ENG3262)	
	ENG4342	Theories of Language Learning: Cognition and Context	
ENG4436 <sup>#</sup>	Drama in the ESL/EFL Classroom (pre-requisite: ENG2333, ENG3274 and LIT3049)		

<sup>Ω</sup> ENG4419 is a Common Core for the two strands. Based on the policy that no double counting is permitted, students wishing to take Double Minors in both strands are required to take a total of 5 elective courses from the lists, in addition to the required Core courses (ie a total of 5 Core courses from both strands) to make up a total of 10 courses.

<sup>#</sup> Students who have not taken the pre-requisite course yet should submit their applications for exemption to the course lecturer directly by email. After getting the approval, students have to contact their programme office to register the course manually.

# Film and Popular Culture

## 電影與流行文化



Entertainment media, including film and popular culture, can have a profound impact on individual knowledge and behaviour and on society. Filmmakers and popular culture exponents play an increasingly vital role in shaping public opinion and transforming society. This Minor aims to equip students with the skills to identify and analyse key issues in the study of film and popular culture, guiding them to acquire a global and critical sensibility.

Domain	Course Code	Course Title	Dept
Electives (choose any 5 courses)	CUS2004	中國電影：創作、風格和接受	LCS
	CUS2012	English Language Popular Culture	
	CUS3014 or CUS3016	Introduction to Film Studies or Studying Films in Context	
	CUS3015	Approaching Popular Media	
	CUS3017	Gender and Popular Culture	
	CUS3019	電視劇：文本、觀眾與身份認同	
	HIS3038	近代中國文化史：電影、流行文化和政治	
	LIT4056	Literature and Film	

# French Studies

## 法語

In line with the University's twin goals of internationalisation and developing students' global awareness, the Minor in the French Studies programme is primarily designed to enrich our students' major studies by content learning (ie French art, culture, education, and/or history) at the University or during their exchange semester(s) in a French university. The second objective of this Minor programme is to equip our students with a level of French competence equivalent to Level A2 or B1 with regard to the Common European Framework of Reference (CEFR).



Domain	Course Code	Course Title	Dept
Core	LIN1014 <sup>∞</sup>	French I	LML
	LIN1017	French II	
	LIN1024	French III	
Electives (choose any 2 courses)	HIS2036	History of Modern France	LCS
	LIN1041	The French-speaking World in Films	LML
	LIN3025	French IV	LML
	LIN3029	French Language and Culture	LML

<sup>∞</sup> Students who have basic French proficiency have the option of taking an additional elective from the list to replace LIN1014 French I. Students' proficiency will be assessed before approval.

# Japanese Studies

## 日語



In line with the University's twin goals of internationalisation and developing students' global awareness, the Minor in Japanese Studies programme is primarily designed to enrich our students' major studies by content learning (e.g. Japanese culture, history and current affairs) at the University or during their exchange semester(s) in a Japanese university. The second objective of this Minor programme is to equip our students with intermediate competence in the Japanese language, which allows students to use Japanese in everyday situations.

Domain	Course Code	Course Title	Dept
Core	LIN1012 <sup>∞</sup>	Japanese I	LML
	LIN1013	Japanese II	
	LIN2034	Japanese III	
Electives (choose any 2 courses)	HIS3010	Modern Japan and its Neighbors since the mid-19th Century	LCS
	LIN2051	Introduction to Washoku: Culture of Japanese Cuisine	LML
	LIN3032	Japanese Language and Culture	LML
	LIN3037	Japanese IV	LML
	LIN3040	Topics in Japanese-Chinese Translation: Manga and Popular Culture	LML

<sup>∞</sup> Students who have basic Japanese proficiency have the option of taking an additional elective from the list to replace LIN1012 Japanese I. Students' proficiency will be assessed before approval.

# Korean Language Studies

## 韓語

In line with the University's twin goals of internationalisation and developing students' global awareness, the Minor in Korean Language Studies programme is primarily designed to enrich our students' major studies by content learning (e.g. Korean culture, history and current affairs) at the University or during their exchange semester(s) in a Korean university. The second objective of this Minor programme is to equip our students with intermediate competence in the Korean language, which allows students to use Korean in everyday situations. This translates to achieving level 3 or higher result in the Test of Proficiency in Korean (TOPIK).

Domain	Course Code	Course Title	Dept
Core	LIN1018	Korean I	LML
	LIN1033	Korean II	
	LIN2035	Korean III	
Electives (choose any 2 courses)	LIN1057	Dynamic Korea: Exploring Contemporary Society, Culture, and Trends	LML
	LIN2042	Exploring Korean Culture and Society through Multimedia	
	LIN2055	Culture and Heritage of Korea	
	LIN3036	Korean Language and Culture	

# Language and Society

## 語言與社會

This Minor is only offered to students who are NON-English-Majors.

The Minor programme aims to develop students' knowledge in subject areas that examine the use of language in a variety of social contexts. It aims to enhance students' awareness and sensitivity to the social meanings of context-specific language use in Chinese, English, and bilingual interaction. The knowledge

and skills students gained in this Minor programme will equip them with a critical and analytical mind to understand the dynamics of social interaction in monolingual mode and in bilingual settings, from everyday conversations to field-specific discourse between teachers and educators, as well as between professionals in the workplace.

### 1. For all students except BA(Lang Studies) - Chinese Major students

(For students admitted before 2020/21, transition period until 2024/25)

Domain	Course Code	Course Title	Dept
Core	ENG1324	Introduction to Linguistics	LML
	ENG2246	Introduction to Sociolinguistics	
Electives (choose any 3 courses)	CHI2450 or CHI3452	語言傳播的理論與應用 or 篇章語言分析	LML
	ENG3267	Language and Gender	
	ENG3340	Spoken and Written Discourse	
	ENG3346 or ENG4343	English as a Global Language or Asian Englishes and English as a Lingua Franca in Asia	
	ENG4292	Pragmatics	
	LIN3015	Introduction to Translation	
	ENG3344 or LIN3016	Chinese-English Contrastive Grammar or Contrastive Analysis of Languages and Translation	
	LIN1012 or LIN1013 or LIN1014 or LIN1017 or LIN1018 or LIN1024 or LIN1030 or LIN1033 or LIN2034 or LIN2035 or LIN2042 or LIN3029 or LIN3032 or LIN3036	Japanese I or Japanese II or French I or French II or Korean I or French III or German I or Korean II or Japanese III or Korean III or Exploring Korean Culture and Society through Multimedia or French Language and Culture or Japanese Language and Culture or Korean Language and Culture	



## 2. For BA(Lang Studies) - Chinese Major students

(For students admitted before 2020/21, transition period until 2024/25)

Domain	Course Code	Course Title	Dept
Core	ENG2246	Introduction to Sociolinguistics	LML
	CHI2450 or CHI3452	語言傳播的理論與應用 or 篇章語言分析	LML
Electives (choose any 4 courses)	ENG3267	Language and Gender	
	ENG3340	Spoken and Written Discourse	
	ENG3346 or ENG4343	English as a Global Language or Asian Englishes and English as a Lingua Franca in Asia	
	ENG4292	Pragmatics	
	LIN3016 or ENG3344	Contrastive Analysis of Languages and Translation or Chinese-English Contrastive Grammar	
	LIN1012 or LIN1013 or LIN1014 or LIN1017 or LIN1018 or LIN1024 or LIN1030 or LIN1033 or LIN2034 or LIN2035 or LIN2042 or LIN3029 or LIN3032 or LIN3036	Japanese I or Japanese II or French I or French II or Korean I or French III or German I or Korean II or Japanese III or Korean III or Exploring Korean Culture and Society through Multimedia or French Language and Culture or Japanese Language and Culture or Korean Language and Culture	

## 3. For all students except BA(Lang Studies) - Chinese Major students

(Applicable for Year 1 students admitted in September 2021 onwards)

Domain	Course Code	Course Title	Dept
Core	ENG1324	Introduction to Linguistics	LML
	ENG2246	Introduction to Sociolinguistics	
Electives (choose any 3 courses)	CHI2450	語言傳播的理論與應用	LML
	ENG3267	Language and Gender	
	ENG3340	Spoken and Written Discourse	
	ENG3346 or ENG4343	English as a Global Language or Asian Englishes and English as a Lingua Franca in Asia	
	LIN2042 or LIN3029 or LIN3032 or LIN3036	Exploring Korean Culture and Society through Multimedia or French Language and Culture or Japanese Language and Culture or Korean Language and Culture	

## 4. For BA(Language Studies) - Chinese Major students

(Applicable for Year 1 students admitted in September 2021 onwards)

Domain	Course Code	Course Title	Dept
Core	ENG2246	Introduction to Sociolinguistics	LML
	CHI2450	語言傳播的理論與應用	LML
Electives (choose any 4 courses)	ENG3267	Language and Gender	
	ENG3340	Spoken and Written Discourse	
	ENG3346 or ENG4343	English as a Global Language or Asian Englishes and English as a Lingua Franca in Asia	
	LIN2042 or LIN3029 or LIN3032 or LIN3036	Exploring Korean Culture and Society through Multimedia or French Language and Culture or Japanese Language and Culture or Korean Language and Culture	

### Music 音樂

On the completion of this Minor, students will be able to:

- Gain proficient knowledge and basic abilities in Music;
- Demonstrate a general knowledge in Music and related academic competencies to meet their future needs; and
- Develop a passion and lifelong learning in Music.

Domain	Course Code	Course Title	Dept
(choose any 5 courses)	CAC3023	Chinese Music Traditions and Culture	CCA
	MUS1248	Creative Musicking	
	MUS2250	Traditions and Practices of Music I	
	MUS3252	Traditions and Practices of Music II	
	MUS3258	Performance Matters I	
	MUS3338	Popular Music and Society	

### Studies on Chinese Language Curriculum 中國語文課程研究



This Minor aims to provide students with insights into Chinese language curriculum and instruction, and thus to foster students' ability to discover the pedagogical content knowledge required for effective Chinese teaching creatively and independently.

Domain	Course Code	Course Title	Dept
Electives (choose any 5 courses)	CHI3436^	校本語文課程與教材發展	CHL
	CHI3614	中國語文教學心理學	
	CHI3617^	課堂語言的理論與實踐	
	CHI3676	語文教學專題研究	
	CHI3677	各體文教學	
	CHI3678	童書教學	
	CHI3679	語文評估	
	CHI3913	中國民俗故事與語文教學	
	CHI3914	影視與中國語文教學	

^ CHI3436 and CHI3617, the Major Cores of BEd(CL) (Programme Code: A5B060), are only applicable for non-BEd(CL) students.

# Teaching Chinese as an International Language

## 國際漢語教學

This Minor aims to broaden students' understanding of teaching Chinese to non-native Chinese speakers (either in Cantonese or Putonghua). Students taking this Minor will acquire professional competence and knowledge of teaching Chinese as an international language in the local and global contexts, including local and international schools in Hong Kong.

Domain	Course Code	Course Title	Dept
Electives (choose any 5 courses)	CHI3613	普通話與中國語文教學	CHL
	CHI3672	國際漢語課程與教材設計	
	CHI3673	國際漢語教學與評估	
	CHI3674	國際漢語教學話語分析	
	CHI3675	粵普對比分析	
	CHI4615	中國語文課程 (非華語學生) 單元教學設計及開發	
	CHI4671	國際漢語學習與習得	

# Translation

## 翻譯

This Minor is designed to develop students' Chinese and English translation skills, strengthen their Chinese and English language proficiency, enhance their cultural awareness and train them to become bilingual communicators. It also aims to widen students' interdisciplinary horizons and broaden their career options.

**New programme structure (For students admitted in and after 2024/25)#**

#Students admitted in or before 2023/24 may have the option to follow the new programme structure.

Domain	Course Code	Course Title	Dept
Core	LIN3015*	Introduction to Translation	LML
	LIN3016	Contrastive Analysis of Languages and Translation	
	LIN3023	Practical Translation	
Electives (choose any 2 courses)	CHI2450	語言傳播的理論與應用	LML
	ENG2336+	Intercultural Communication	
	ENG3344%	Chinese-English Contrastive Grammar	
	ENG4269%	Comparative Language Studies	
	LIN3031	Culture and Translation	
	LIN3043	Computer-assisted Translation	
LIN3044\$	English for Cross-cultural Communication in the Greater Bay Area and Beyond		

Note: The courses listed below are Major (Core)/Common Core courses for the programmes concerned and are thus not applicable for students in these programmes to declare the Minor due to the double-counting policy stipulated by FHM.

\* Not applicable for both Chinese and English majors of BA(Lang Studies) students [2023-27 cohort and before]. Students concerned are required to take one more elective (total 3 electives) as substitution.

\$ Not applicable for BA(ESDC) students.

+ Not applicable for both Chinese and English majors of BA(Lang Studies) students [2023-27 cohort and before]. Not applicable to BA(TCSL) students who choose this course as a core.

% Choose either ENG3344 or ENG4269 as elective.

Existing programme structure will co-exist with the new structure but will be phased out in 2026/27 (Only applicable to students admitted in or before 2023/24 academic year)

Domain	Course Code	Course Title	Dept
Core	LIN3015*	Introduction to Translation	LML
	LIN3016	Contrastive Analysis of Languages and Translation	
	LIN3023	Practical Translation	
Electives (choose any 2 courses)	CHI2450	語言傳播的理論與應用	LML
	CHI3452	篇章語言分析	
	CHI3565*	漢語修辭學	
	ENG2325 <sup>v</sup>	English Grammar I	
	ENG2336+	Intercultural Communication	
	ENG3329 <sup>v</sup>	English Grammar II	
	ENG3344%	Chinese-English Contrastive Grammar	
	ENG4269%	Comparative Language Studies	
	LIN3031	Culture and Translation	
	LIN3043	Computer-assisted Translation	
LIN3044 <sup>▲</sup>	English for Cross-cultural Communication in the Greater Bay Area and Beyond	LCS	
LIT3011	Chinese Literature in English Translation		
LIT4021 <sup>◆</sup>	Comparative Study of Chinese and Western Literature	LCS	

Note: The courses listed below are Major (Core)/Common Core courses for the programmes concerned and are thus not applicable for students in these programmes to declare the Minor due to the double-counting policy stipulated by FHM.

\* Not applicable for both Chinese and English majors of BA(Lang Studies) students [2015-19 cohort and onwards]. Students concerned are required to take 1 more elective (total 3 electives) as substitution.

+ Not applicable for both Chinese and English Majors of BA(Lang Studies) and BA(TCSL) students.

\$ Not applicable for BA(Lang Studies) Chinese Major and BEd(CL).

% Not applicable for both Chinese and English Majors of BA(Lang Studies) students [2014-18 cohort and before] and BA(TCSL) students. For students in both Chinese and English Majors of BA(Lang Studies) [2015-19 cohort and onwards] and other programmes, you could choose either ENG3344 or ENG4269 as elective.

<sup>v</sup> Not applicable for BEd(EL) and BA(Lang Studies) English Major students.

<sup>▲</sup> Not applicable for BA(ESDC) students.

<sup>◆</sup> Not applicable for both Chinese and English Majors of BA(Lang Studies) students.

# Visual Arts

## 視覺藝術

On the completion of this Minor, students will be able to:

- Gain proficient knowledge and basic abilities in Visual Arts;
- Demonstrate a general knowledge in Visual Arts and related academic competencies to meet their future needs; and
- Develop passion and lifelong learning in Visual Arts.

Domain	Course Code	Course Title	Dept
(choose any 5 courses)	ART1155	Craft	CCA
	ART1156	Contextual Studies of Art	
	ART1197	Graphic Communication	
	ART2181	Drawing for Visualization and Experimentation	
	ART3169	Design for Living	
	ART3182	Function and Expression in Ceramics	
	ART3183	Painting as Expression and Identity	
	ART3185	Digital Imaging and Interactive Media	
	ART3198	Print Media	
	ART4159	Aesthetics and Art Criticism	
	ART4168	Chinese Painting and Calligraphy	
	ART4184	Sculpture, Installation and Environmental Art	


# GENERAL EDUCATION

General Education (GE) aims to broaden students' intellectual horizons, help them make connections among different areas of knowledge between their formal studies and life outside the classroom, and strengthen their capacity for sound thinking and good judgement. GE offers a varied but balanced mix of individual courses across a range of subject areas and disciplines.

Under the new curriculum (Cohort 2019/20 or after), GE is set within an integrated structure of the following:

- General Education Foundation Course
- General Education Breadth Courses
- Experiential Learning
- University ePortfolio

► Please visit General Education Office for details



## General Education Breadth Courses

The General Education Breadth Courses (GEBCs) are composed of three components, namely New Six Arts (GELS–New Six Arts) (Level 1-2), Positive and Values Education (PAVE) Courses and General Education Interdisciplinary Courses (GEIC) (Level 4). Students have to take one course under each component for fulfilling the GEBCs (9 cps) requirement.

Component	Course Code	Course Title	Dept
NSA	GEN1003	Experiencing Chinese Characters through Animation	CCA
	GEN1004	Musicking with Chineseness by Art Tech	CCA
	GEN1005	Exploring the Creative Potential of Music, Technology and Chinese Tradition	CCA
	GEN1011	中國禮文化的故事：詰問與反思	LCS
	GEN1014	囍？喜！	CHL
	GEN2001	智慧漢字與中華文化	CHL
PAVE	GEK1027	Multiculturalism and International Mindedness	CHL
	GEK1030	儒家的道德理論及其於當代社會的實踐	LCS
	GEK1038	智讀聖賢「書」－《四書》的古學與今用	CHL
	GEK1039	涵泳經典文化：道教、佛教與正向人生	CHL
	GEK2020	Positive Communication in Educational Settings	ELE
	GEK2033	中華經典、文化保育與文化安全	CHL
GEICs	GEI4003	Ideals and Reality: Urban Environments	ELE
	GEI4005	Biographical Films: Arts, Societies and Human Development	LCS
	GEI4011	Work: From Factory Floor to Our Robot Future	LCS

## Experiential Learning

Experiential Learning (EL) is composed of a 3 cps Co-curricular and Service Learning Course (CSLCs) and a 3 cps Experiential Learning Course (ELCs). Students are required to take one course from each component.

Component	Course Code	Course Title	Dept
CSLCs	GEM1017	Musical Arts in Action	CCA
	GEM1029	Understanding Linguistic and Related Barriers through Services to Socially Disadvantaged Children	LML
	GEM1030	Transforming Children Through Reading Stories in English	ELE
	GEM1038	語文嘉年華	CHL
	GEM1039	創意戲劇策略與語文教室	CHL
	GEM1047	非華語生學中文：以中史動畫為基礎	LCS
	GEM1049	民俗傳人	CHL
	GEM1053	English Carousel	ELE
	GEM1054	大灣區文化體驗與實踐	CHL
	GEM2045	Community Reading and Literacy	LCS
	GEM2046	漫遊社區·悅讀文學：香港文學導賞團	LCS
	ELCs	GEL1001	Exploring Hong Kong's Rural Heritage and Nature
GEL2013		鍊成作者路：書寫內在世界	LCS
GEL2016		Urban Society and Urban Life in Hong Kong and the Greater Bay Area	ELE
GEL2017		Exploring Japanese Culture from Hong Kong	LML
GEL2018		Exploring the French Presence in Hong Kong	LML
GEL2019		Mastering Korea through Experiential Activities	LML
ELC on Entrepreneurship and Innovation (ELC on E&I)	GEL1022 <sup>^</sup>	Developing Entrepreneurial Spirit and Innovation in the Humanities for the Community	ELE
	GEL3027 <sup>^</sup>	Entrepreneurship, Innovation and National Security Education in the Context of Humanities	

<sup>^</sup> Students from non-BEd programmes are required to take the new compulsory ELC on E&I. Students from BA(ESDC) in 2023/24 cohort may take GEL3027 in Year 3 Semester 2 for the pilot.

## University ePortfolio

Under the new curriculum from 2019/20 cohorts onwards, General Education Consolidation Course (GECC) will be phased out and transformed into University ePortfolio (UePortfolio) course. Students are required to take one course (3 cps) as "capstone" course. FHM offers the following UePortfolio courses in 2022/23.

Component	Course Code	Course Title	Dept
UePortfolio	GEJ4021	The Language We Live By	CHL
	GEJ4022	Becoming a Language Educator in the Era of Change	ELE
	GEJ4023	Enhancing Critical Literacy through Current Social Issues	ELE
	GEJ4024	Towards a Critical Approach to English Language Teaching	ELE
	GEJ4025	Building your UePortfolio on Multilingual Self and Society	LML
	GEJ4026	Culture and Contemporary Life	LCS
	GEJ4028	On Becoming a Cultured and Artistic Person	CCA



# FREE ELECTIVE COURSES

On top of the Major courses, free electives provide greater flexibility and multiple learning pathways for students to develop their interests and explore their career aspirations. Each course carries 3 cps.

Course Code	Course Title	Dept
ART1155	Craft	CCA
ART1156	Contextual Studies of Art	CCA
ART1197	Graphic Communication	CCA
ART1230	Therapeutic arts in education	CCA
ART2181	Drawing for Visualization and Experimentation	CCA
ART3169	Design for Living	CCA
ART3182	Function and Expression in Ceramics	CCA
ART3183	Painting as Expression and Identity	CCA
ART3185	Digital Imaging and Interactive Media	CCA
ART3198	Print Media	CCA
ART4159	Aesthetics and Art Criticism	CCA
ART4168	Chinese Painting and Calligraphy	CCA
ART4184	Sculpture, Installation and Environmental Art	CCA
ART4218	Painting the Wall	CCA
CAC1002	Exploring Visual Arts	CCA
CAC1004	Moving into Dancing World	CCA
CAC1005	Theatre and Stage Arts	CCA
CAC2022	Cultural Perspectives in Creative Arts	CCA
CAC3023	Chinese Music Traditions and Culture	CCA
CHI1559	現代漢語	CHL
CHI1666	現代漢語通論	CHL
CHI2571	媒體寫作	LCS
CHI3436	校本語文課程與教材發展	CHL
CHI3565	漢語修辭學	LML
CHI3573	漢語語言學專題	CHL
CHI3575	漢字學	CHL
CHI3613	普通話與中國語文教學	CHL
CHI3614	中國語文教學心理學	CHL
CHI3617	課堂語言的理論與實踐	CHL
CHI3672	國際漢語課程與教材設計	CHL
CHI3673	國際漢語教學與評估	CHL
CHI3674	國際漢語教學話語分析	CHL
CHI3675	粵普對比分析	CHL
CHI3676	語文教學專題研究	CHL
CHI3677	各體文教學	CHL
CHI3678	童書教學	CHL
CHI3679	語文評估	CHL
CHI3712	粵語與香港本土文化	CHL
CHI3713	普通話語音研習及理論應用	CHL
CHI3714	古代漢語	CHL
CHI3725	語文教學與資訊科技素養	CHL
CHI3741	朗誦與語文教學	CHL
CHI3913	中國民俗故事與語文教學	CHL
CHI3914	影視與中國語文教學	CHL
CHI4577	漢語音韻學	CHL
CHI4585	中國傳統語言學專書研讀	CHL
CHI4615	中國語文課程(非華語學生)單元教學設計及開發	CHL
CHI4671	國際漢語學習與習得	CHL
CUS1001	中國傳統人生哲學	LCS
CUS1002	中國文化概說	LCS
CUS1022	中國歷史文化與遺產	LCS
CUS4019	中國思想：原典選讀	LCS

Course Code	Course Title	Dept
ENG1249	English Grammar for Teachers I	LML
ENG1324	Introduction to Linguistics	LML
ENG1326	Introduction to English Phonetics and Phonology	LML
ENG2246	Introduction to Sociolinguistics	LML
ENG2250	English Grammar for Teachers II	LML
ENG2336	Intercultural Communication	LML
ENG2347	Words and Their Meanings	LML
ENG3267	Language and Gender	LML
ENG3340	Spoken and Written Discourse	LML
ENG3344	Chinese-English Contrastive Grammar	LML
ENG3346	English as a Global Language	LML
ENG3400	Advanced Phonology	LML
ENG4292	Pragmatics	LML
HIS1003	Introduction to Historical Ideas and Practices	LCS
HIS1004	Life in the Ancient World	LCS
HIS1005	Origins of the Modern World	LCS
HIS1043	Modern Hong Kong: From Opium War to Basic Law	LCS
HIS2008	China: Reform and Revolution from Late Qing to 1949	LCS
HIS2042	中國歷史(三)：宋至清中葉	LCS
HIS3009	Revolution and Modernity: History of the PRC	LCS
HIS3011	The Making of Modern Asia: Decolonization and Independence	LCS
HIS3012	World War and World Peace	LCS
HIS3024	中國政治及法律制度史	LCS
HIS3038	近代中國文化史：電影、流行文化和政治	LCS
HIS3047	中國歷史地理	LCS
HIS4015	Historiography	LCS
HIS4048	中國思想史	LCS
INS1043	Creativity and Human Development	CCA
LIN1012	Japanese I	LML
LIN1013	Japanese II	LML
LIN1014	French I	LML
LIN1017	French II	LML
LIN1018	Korean I	LML
LIN1024	French III	LML
LIN1033	Korean II	LML
LIN1041	The French-speaking World in Films	LML
LIN1057	Dynamic Korea: Exploring Contemporary Society, Culture, and Trends	LML
LIN2020	Child Language Development	LML
LIN2028	French Art and Culture	LML
LIN2034	Japanese III	LML
LIN2035	Korean III	LML
LIN2042	Exploring Korean Culture and Society through Multimedia	LML
LIN2051	Introduction to Washoku: Culture of Japanese Cuisine	LML
LIN2055	Culture and Heritage of Korea	LML
LIN3015	Introduction of Translation	LML
LIN3016	Contrastive Analysis of Language and Translation	LML
LIN3021	Language, Brain, and the Mind	LML
LIN3023	Practical Translation	LML
LIN3025	French IV	LML
LIN3026	Advanced French	LML
LIN3027	Contemporary French Society	LML
LIN3029	French Language and Culture	LML
LIN3031	Culture and Translation	LML
LIN3032	Japanese Language and Culture	LML
LIN3036	Korean Language and Culture	LML
LIN3037	Japanese IV	LML
LIN3040	Topics in Japanese-Chinese Translation: Manga and Popular Culture	LML
LIN3045	English Grammar	LML
LIN3046	Language Information Management	LML

Course Code	Course Title	Dept
LIT1001	文學概論	LCS
LIT1002	兒童文學	LCS
LIT1040	Approaching English Literature	LCS
LIT2003	文學創作	LCS
LIT2006	中國古代文學 (一) (先秦 – 隋唐)	LCS
LIT2007	中國古代文學 (二) (宋 – 清)	LCS
LIT2008	中國現代文學	LCS
LIT2043	Literatures in English I: Fiction	LCS
LIT2045	Literatures in English II: Drama	LCS
LIT2048	Literature in Context I: 1789 – 1914	LCS
LIT3013	專家詩	LCS
LIT3046	Creative Writing	LCS
LIT3047	Literatures in English: Poetry	LCS
LIT3050	Readings in New Literatures in English	LCS
LIT3052	Literature in Context II: 1914 – 2000	LCS
LIT4020	中國文學批評	LCS
LIT4021	中西文學比較	LCS
MUS1213	Jazz Study: An Introduction	CCA
MUS1248	Creative Musicking	CCA
MUS2250	Traditions and Practices of Music I	CCA
MUS3252	Traditions and Practices of Music II	CCA
MUS3258	Performance Matters I	CCA
MUS3338	Popular Music and Society	CCA

# ENQUIRIES

	Programme/ Department	Second Major	Minor	Programme/ Departmental Coordinator	Enquiries
Business English in the 21st Century 21世紀商務英文	CLE	-	✓	Ms LIN Yanyan Catherine 2948 8173 cyilin@eduhk.hk	Ms Yumi YE 2948 7896 cle@eduhk.hk
Chinese Language 中國語文	BEd(CL) Programme	✓	✓	Dr LIAO Xian 2948 7240 xliao@eduhk.hk	Mr Harry IP 2948 7194 a5b060@eduhk.hk
Chinese Religions and Culture 中國宗教與文化	LCS	-	✓	Dr FUNG Shu Fun 2948 7191 sffung@eduhk.hk	Ms Sandy CHAN 2948 6180 yeeman@eduhk.hk
Culture, Creativity, and Care 文化、創意、情切		-	✓	Dr TSE Yin Nga Kelly 2948 7383 yntse@eduhk.hk	
English Language 英國語文	BEd(EL) Programme	✓	✓	Ms CHAN Ka Yin Clairine 2948 7392 cky@eduhk.hk	Ms Karen LAU 2948 7152 a5b059@eduhk.hk
English Language Teaching (Primary) 英語教育 (小學)	ELE	-	✓	Ms CHAN Ka Yin Clairine 2948 7392 cky@eduhk.hk	Ms Ingrid LAW 2948 7269 ikllaw@eduhk.hk
English Language Teaching (Secondary) 英語教育 (中學)			✓		
Film and Popular Culture 電影與流行文化	LCS	-	✓	Dr BANERJEE Bidisha 2948 6010 banerjee@eduhk.hk	Ms Sandy CHAN 2948 6180 yeeman@eduhk.hk
French Studies 法語	LML	-	✓	Ms MOULIMOIS Alice 2948 7254 moulimoisal@eduhk.hk	Ms Teresa YEUNG 2948 7263 tysyeung@eduhk.hk
Japanese Studies 日語			✓	Mr CHEN Charles Chun Jr 2948 7902 charleschenjr@eduhk.hk	
Korean Language Studies 韓語			✓	Ms YOON Sung Hee 2948 7309 shyoon@eduhk.hk	
Language and Society 語言與社會			✓	TBC	
Music 音樂	CCA	✓	✓	Ms WONG Wai Ching Zerlina 2948 8085 zwcwong@eduhk.hk	ccamusic@eduhk.hk
Visual Arts 視覺藝術				Ms LUNG Yuet Ching Joyce 2948 6397 jyclung@eduhk.hk	ccaarts@eduhk.hk
Studies on Chinese Language Curriculum 中國語文課程研究	CHL	-	✓	Dr LIAO Xian 2948 7240 xliao@eduhk.hk	Ms Carol CHOW 2948 8153 ckaman@eduhk.hk
Teaching Chinese as an International Language 國際漢語教學			✓		
Translation 翻譯	LML	-	✓	Dr LIU Fung Ming Christy 2948 7887 liufm@eduhk.hk	Ms Teresa YEUNG 2948 7263 tysyeung@eduhk.hk

Every effort has been made to ensure the accuracy of the information contained in this booklet. Changes to any aspects of the programmes may be made from time to time as due to change of circumstances and the University reserves the right to revise any information contained in this booklet as it deems fit without prior notice. The University accepts no liability for any loss or damage arising from any use or misuse of or reliance on any information contained in this booklet.

Please refer to Registry's website at [www.eduhk.hk/re](http://www.eduhk.hk/re) for requirements, application procedures and other details.

Information on this booklet is subject to change and review.

Please refer to FHM's programme website at [www.eduhk.hk/fhm/en/page/second-major-and-minor](http://www.eduhk.hk/fhm/en/page/second-major-and-minor) for the latest course information.



**FACULTY OF HUMANITIES** | 學人院  
人能弘道 *Humanity can broaden the Way*

 **Faculty of Humanities**

The Education University of Hong Kong  
B2-G/F-04, 10 Lo Ping Road, Tai Po  
New Territories, Hong Kong

 (852) 2948 7237

 (852) 2948 6199

 [fhm@eduhk.hk](mailto:fhm@eduhk.hk)



[www.eduhk.hk/fhm](http://www.eduhk.hk/fhm)



[www.instagram.com/  
eduhk.fhm](https://www.instagram.com/eduhk.fhm)



[www.facebook.com/  
eduhk.fhm](https://www.facebook.com/eduhk.fhm)